

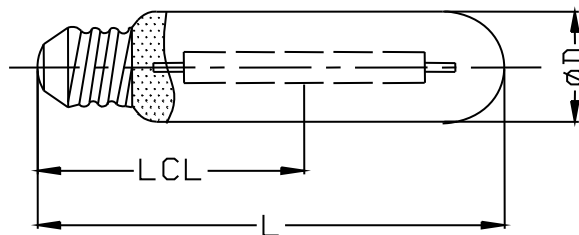
Spec. of Super HPS FUTEK Lamp
FT-SHPS- 250 W 220V 50/60 Hz
T type niobium tube

Doc No.: TEK-001

Edition No.: A /0

Page 1 Total 1

Out dimensions chart



This specification measure up to GB/T 13259 & IEC60662

1.Geometry dimensions

Item	Item Description	parameter
1.1	dimension (ΦD) [mm]	48 Max
1.2	dimension (LCL) [mm]	153~163
1.3	dimension (L) full length of lamp [mm]	260 Max
1.4	Base type /	E40
1.5	Base axuality °	3 Max

2.Starting description

2.1	Starting voltage limit requirement [V]	198
2.2	Starting time [S]	10 Max

3. Ignite description

3.1	pulse voltage [KV]	3~5
3.2	pulse time [us]	1.95 ± 0.05
3.3	pulse times [times]	once per cycle

4.Electrical technical data

4.1	voltage [V]	105 ± 15
4.2	current(reference) [A]	3
4.3	wattage(reference) [W]	250 (280 max)

5.Light technical data

5.1	luminous flux [Lm]	Rated: 32000	Ave: 30000	Min: 27000
5.2	Colour temperature [K]	2100		
5.3	Colour index /	≤ 30		
5.4	Lumen maintenance(2000h) [%]	> 90		
5.5	average life [h]	30000		

6. Reference ballast characteristic

6.1	Rated frequency [Hz]	50
6.2	Rated voltage [V]	220
6.3	Reference current [A]	3
6.4	Voltage/current ratio /	60
6.5	Power factor /	0.06 ± 0.005

7. Others

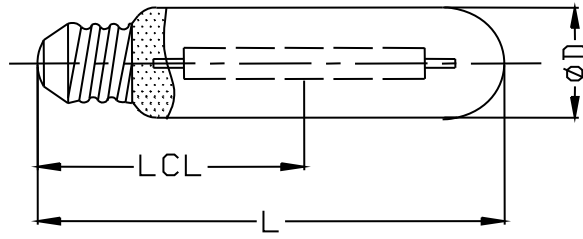
7.1	base temperature [°C]	250 Max.
7.2	outer bulb temperature [°C]	400 Max.
7.3	Base torque force [N.m]	5 Min.
7.4	Burning position /	horizontal

Write by: DR.M.HELA

Audit: BAHER

approver:

Date: 2011/ 4/5



GB/T 13259 & IEC60662

1.				
1.1		[mm]	48 Max	
1.2)	[mm]	153~163	
1.3		[mm]	260 Max	
1.4		/	E40	
1.5		°	3 Max	
2.				
2.1		[V]	198	
2.2		[S]	10 Max	
3.				
3.1		[KV]	3~5	
3.2		[us]	1.95 ± 0.05	
3.3		[次]	1	
4.				
4.1		[V]	105 ± 15	
4.2	()	[A]	3	
4.3	()	[W]	250 (280 max)	
5.				
5.1		[Lm]	30000	27000
5.2		[K]	2100	
5.3		/	≤ 30	
5.4		[%]	> 90	
5.5		[h]	30000	
6.				
6.1		[Hz]	50	
6.2		[V]	220	
6.3		[A]	3	
6.4		/	60	
6.5		/	0.06 ± 0.005	
7.				
7.1		[°C]	250 Max.	
7.2		[°C]	400 Max.	
7.3		[N.m]	5 Min.	
7.4		/		